



## Sistema DW - ECO 1.0 304

### Chimenea modular metálica para evacuación de humos y gases de los productos de la combustión de doble pared fabricada en acero inoxidable interior y exterior

#### MATERIAL

Pared Interior: AISI 304

Pared Exterior: AISI 304

#### ACABADO EXTERIOR

Brillante

Colores RAL (consulta página 14 para acabados especiales)

Exterior galvanizado -15% (sólo tramos rectos y desviaciones)

#### AISLAMIENTO

Lana de roca rígida de alta densidad (120kg/m<sup>3</sup>)

#### ESPESORES (mm)

Pared interior: 0,4 mm

Aislamiento: 25 mm

Pared exterior: 0,4 mm

#### DIÁMETROS DISPONIBLES (mm)

Ø130 a Ø200

#### SISTEMA DE UNIÓN

Conexión macho-hembra con **abrazadera de unión sencilla**

#### NIVEL DE ESTANQUEIDAD

T--- N1: Sin necesidad de junta

T200 - H1: Incluir junta de estanqueidad (DW2526Ø).



"Para incluir junta de estanqueidad (T<200°C) preinstalada de fábrica, sustituir el código 908 por A07 y el 909 por B01".



#### APLICACIONES

- Calderas de gas y gasoil
- No condensación



#### CARACTERÍSTICAS

- Temperatura de trabajo hasta 600°C
- **Soldadura TIG/LÁSER** en continuo en todas las piezas
- **Abrazadera de unión incluida (excepto terminales)**
- Posibilidad de **corte de módulos rectos a medida** en obra (ver instrucciones de corte página 53)

#### CERTIFICADO CE

0036 CPR 9174 030

0036 CPR 9174 044

#### CLASIFICACIONES CE (UNE-EN 1856-1)

T600 - N1 - D - Vm - L20040 - G(70)

T450 - N1 - D - Vm - L20040 - G(60)

T400 - N1 - W - Vm - L20040 - O(30)

T200 - H1 - W - Vm - L20040 - O(00) (con junta de estanqueidad DW2526).



Módulo recto 1.000 mm



Módulo recto 500 mm



Módulo recto 250 mm



Módulo recto regulable  
400 - 560 mm



Módulo recto regulable  
560 - 920 mm

|       |                 |             |                 |             |                 |            |                  |             |                  |             |
|-------|-----------------|-------------|-----------------|-------------|-----------------|------------|------------------|-------------|------------------|-------------|
| ∅ 130 | 908-DWECO130130 | <b>127€</b> | 908-DWECO140130 | <b>90€</b>  | 908-DWECO150130 | <b>65€</b> | 908-DWECO5440130 | <b>127€</b> | 908-DWECO5450130 | <b>189€</b> |
| ∅ 150 | 908-DWECO130150 | <b>155€</b> | 908-DWECO140150 | <b>101€</b> | 908-DWECO150150 | <b>74€</b> | 908-DWECO5440150 | <b>143€</b> | 908-DWECO5450150 | <b>214€</b> |
| ∅ 180 | 908-DWECO130180 | <b>175€</b> | 908-DWECO140180 | <b>120€</b> | 908-DWECO150180 | <b>86€</b> | 908-DWECO5440180 | <b>168€</b> | 908-DWECO5450180 | <b>230€</b> |
| ∅ 200 | 908-DWECO130200 | <b>207€</b> | 908-DWECO140200 | <b>139€</b> | 908-DWECO150200 | <b>97€</b> | 908-DWECO5440200 | <b>192€</b> | 908-DWECO5450200 | <b>263€</b> |



Codo 15°



Codo 30°



Codo 45°



Codo 60°



Codo 90°

|       |                 |             |                 |             |                 |             |                 |             |                 |             |
|-------|-----------------|-------------|-----------------|-------------|-----------------|-------------|-----------------|-------------|-----------------|-------------|
| ∅ 130 | 909-DWECO160130 | <b>112€</b> | 909-DWECO170130 | <b>112€</b> | 908-DWECO180130 | <b>90€</b>  | 909-DWECO840130 | <b>138€</b> | 908-DWECO600130 | <b>129€</b> |
| ∅ 150 | 909-DWECO160150 | <b>125€</b> | 909-DWECO170150 | <b>125€</b> | 908-DWECO180150 | <b>101€</b> | 909-DWECO840150 | <b>151€</b> | 908-DWECO600150 | <b>147€</b> |
| ∅ 180 | 909-DWECO160180 | <b>144€</b> | 909-DWECO170180 | <b>144€</b> | 908-DWECO180180 | <b>120€</b> | 909-DWECO840180 | <b>175€</b> | 908-DWECO600180 | <b>170€</b> |
| ∅ 200 | 909-DWECO160200 | <b>168€</b> | 909-DWECO170200 | <b>168€</b> | 908-DWECO180200 | <b>139€</b> | 909-DWECO840200 | <b>202€</b> | 908-DWECO600200 | <b>197€</b> |



Te 90°



Te 135°



Colector de hollín



Colector de hollín aislado



Colector de hollín  
con desagüe

|       |                  |             |                 |             |                  |               |                   |             |                 |            |
|-------|------------------|-------------|-----------------|-------------|------------------|---------------|-------------------|-------------|-----------------|------------|
| ∅ 130 | 908-DWECO3170130 | <b>188€</b> | 909-DWECO120130 | <b>330€</b> | 909-DWECO5510130 | <b>48,91€</b> | 909-DWECO20330130 | <b>78€</b>  | 909-DWECO440130 | <b>59€</b> |
| ∅ 150 | 908-DWECO3170150 | <b>204€</b> | 909-DWECO120150 | <b>367€</b> | 909-DWECO5510150 | <b>56€</b>    | 909-DWECO20330150 | <b>88€</b>  | 909-DWECO440150 | <b>68€</b> |
| ∅ 180 | 908-DWECO3170180 | <b>244€</b> | 909-DWECO120180 | <b>428€</b> | 909-DWECO5510180 | <b>61€</b>    | 909-DWECO20330180 | <b>101€</b> | 909-DWECO440180 | <b>72€</b> |
| ∅ 200 | 908-DWECO3170200 | <b>280€</b> | 909-DWECO120200 | <b>508€</b> | 909-DWECO5510200 | <b>70€</b>    | 909-DWECO20330200 | <b>113€</b> | 909-DWECO440200 | <b>80</b>  |



Colector de hollín  
con desagüe aislado



Módulo de inspección  
L=330 mm



Módulo de inspección  
con tapa 40 Pa (N1)



Terminal salida libre



Terminal salida cónica

|       |                   |             |                  |             |                 |             |                 |            |                  |             |
|-------|-------------------|-------------|------------------|-------------|-----------------|-------------|-----------------|------------|------------------|-------------|
| ∅ 130 | 909-DWECO14600130 | <b>90€</b>  | 909-DWECO5430130 | <b>131€</b> | 909-DWECO680130 | <b>229€</b> | 908-DWECO320130 | <b>59€</b> | 908-DWECO32C0130 | <b>68€</b>  |
| ∅ 150 | 909-DWECO14600150 | <b>102€</b> | 909-DWECO5430150 | <b>147€</b> | 909-DWECO680150 | <b>239€</b> | 908-DWECO320150 | <b>67€</b> | 908-DWECO32C0150 | <b>77€</b>  |
| ∅ 180 | 909-DWECO14600180 | <b>116€</b> | 909-DWECO5430180 | <b>172€</b> | 909-DWECO680180 | <b>250€</b> | 908-DWECO320180 | <b>78€</b> | 908-DWECO32C0180 | <b>89€</b>  |
| ∅ 200 | 909-DWECO14600200 | <b>129€</b> | 909-DWECO5430200 | <b>197€</b> | 909-DWECO680200 | <b>264€</b> | 908-DWECO320200 | <b>89€</b> | 908-DWECO32C0200 | <b>102€</b> |



## Sistema DW - ECO 1.0 304



Terminal anti-lluvia



Terminal anti-viento



Terminal horizontal  
con rejilla



Terminal Gas Light



Adaptador  
simple a doble

|       |                  |             |                  |             |                  |             |                   |             |                 |               |
|-------|------------------|-------------|------------------|-------------|------------------|-------------|-------------------|-------------|-----------------|---------------|
| Ø 130 | 908-DWECO5260130 | <b>83€</b>  | 909-DWECO5270130 | <b>144€</b> | 909-DWECO5320130 | <b>88€</b>  | 908-DWECO43500130 | <b>213€</b> | 908-DWECO370130 | <b>43,14€</b> |
| Ø 150 | 908-DWECO5260150 | <b>91€</b>  | 909-DWECO5270150 | <b>158€</b> | 909-DWECO5320150 | <b>100€</b> | 908-DWECO43500150 | <b>235€</b> | 908-DWECO370150 | <b>47,47€</b> |
| Ø 180 | 908-DWECO5260180 | <b>108€</b> | 909-DWECO5270180 | <b>187€</b> | 909-DWECO5320180 | <b>117€</b> | 908-DWECO43500180 | <b>256€</b> | 908-DWECO370180 | <b>59€</b>    |
| Ø 200 | 908-DWECO5260200 | <b>125€</b> | 909-DWECO5270200 | <b>216€</b> | 909-DWECO5320200 | <b>138€</b> | 908-DWECO43500200 | <b>286€</b> | 908-DWECO370200 | <b>68€</b>    |



Adaptador  
doble a simple



Soporte de carga  
regulable L=220 mm



Adaptador Hurricane



Abrazadera de unión 1.0



Abrazadera  
para amarre con tornillo

|       |                  |               |                  |             |                   |             |            |               |              |               |
|-------|------------------|---------------|------------------|-------------|-------------------|-------------|------------|---------------|--------------|---------------|
| Ø 130 | 908-DWECO37A0130 | <b>43,14€</b> | 908-DWECO3790130 | <b>163€</b> | 908-DWECO44760130 | <b>95€</b>  | DW25450130 | <b>8,92€</b>  | DW2510630130 | <b>35,73€</b> |
| Ø 150 | 908-DWECO37A0150 | <b>47,47€</b> | 908-DWECO3790150 | <b>184€</b> | 908-DWECO44760150 | <b>120€</b> | DW25450150 | <b>10,42€</b> | DW2510630150 | <b>38,82€</b> |
| Ø 180 | 908-DWECO37A0180 | <b>59€</b>    | 908-DWECO3790180 | <b>214€</b> | 908-DWECO44760180 | <b>147€</b> | DW25450180 | <b>13,41€</b> | DW2510630180 | <b>46,02€</b> |
| Ø 200 | 908-DWECO37A0200 | <b>68€</b>    | 908-DWECO3790200 | <b>245€</b> | 908-DWECO44760200 | <b>185€</b> | DW25450200 | <b>19,36€</b> | DW2510630200 | <b>46,02€</b> |



Base de abrazadera  
distanciadora\*



Alas distanciadoras A\*




Alas distanciadoras B\*



Alas distanciadoras C\*



Alas distanciadoras D\*

|       |              |               |  |               |               |            |               |             |               |             |
|-------|--------------|---------------|--|---------------|---------------|------------|---------------|-------------|---------------|-------------|
| Ø 130 | DW2514620130 | <b>47,47€</b> |  |               |               |            |               |             |               |             |
| Ø 150 | DW2514620150 | <b>52€</b>    |  |               |               |            |               |             |               |             |
| Ø 180 | DW2514620180 | <b>71€</b>    | 665-ZUWA1462A  | <b>43,14€</b> | 665-ZUWA1462B | <b>59€</b> | 665-ZUWA1462C | <b>75 €</b> | 665-ZUWA1462D | <b>95 €</b> |
| Ø 200 | DW2514620200 | <b>91€</b>    |  *Consultar página 215 para ver distancias de separación. |               |               |            |               |             |               |             |



Abrazadera fijación pared  
regulable 50-80 mm



Abrazadera de soporte



Abrazadera forjado inox



Soporte de techo



Abrazadera  
fijación a techo

|       |             |               |             |             |            |               |             |               |              |               |
|-------|-------------|---------------|-------------|-------------|------------|---------------|-------------|---------------|--------------|---------------|
| Ø 130 | DW255560130 | <b>35,73€</b> | DW258580130 | <b>133€</b> | DW25620130 | <b>38,82€</b> | DW259360130 | <b>46,02€</b> | DW25118B0130 | <b>44,58€</b> |
| Ø 150 | DW255560150 | <b>41,71€</b> | DW258580150 | <b>133€</b> | DW25620150 | <b>43,14€</b> | DW259360150 | <b>50€</b>    | DW25118B0150 | <b>53€</b>    |
| Ø 180 | DW255560180 | <b>47,47€</b> | DW258580180 | <b>149€</b> | DW25620180 | <b>46,02€</b> | DW259360180 | <b>59€</b>    | DW25118B0180 | <b>60€</b>    |
| Ø 200 | DW255560200 | <b>55€</b>    | DW258580200 | <b>170€</b> | DW25620200 | <b>46,02€</b> | DW259360200 | <b>67€</b>    | DW25118B0900 | <b>60€</b>    |



Abrazadera vientos



Abrazadera con doble pértiga telescópica



Pasamuros

**i** \*Necesario instalar collarín junto con el cubreaguas



Cubreaguas plano inox



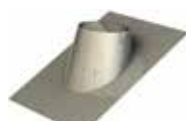
Cubreaguas plomo 0°- 5°

|       |            |               |             |             |             |               |              |             |             |             |
|-------|------------|---------------|-------------|-------------|-------------|---------------|--------------|-------------|-------------|-------------|
| Ø 130 | DW25420130 | <b>19,36€</b> | DW251910130 | <b>143€</b> | DW259870130 | <b>47,47€</b> | DW2511280130 | <b>155€</b> | DW259370130 | <b>214€</b> |
| Ø 150 | DW25420150 | <b>23,83€</b> | DW251910150 | <b>158€</b> | DW259870150 | <b>47,47€</b> | DW2511280150 | <b>170€</b> | DW259370150 | <b>238€</b> |
| Ø 180 | DW25420180 | <b>25,32€</b> | DW251910180 | <b>164€</b> | DW259870180 | <b>58€</b>    | DW2511280180 | <b>175€</b> | DW259370180 | <b>246€</b> |
| Ø 200 | DW25420200 | <b>26,79€</b> | DW251910200 | <b>179€</b> | DW259870200 | <b>59€</b>    | DW2511280200 | <b>193€</b> | DW259370200 | <b>269€</b> |

**i** \*Necesario instalar collarín junto con el cubreaguas



Cubreaguas plomo 5°- 25°



Cubreaguas plomo 25°- 45°



Cubreaguas 5°-25° aluminio



Cubreaguas 25° - 45° aluminio



Collarín antitormenta

|       |             |             |             |             |               |             |               |             |             |               |
|-------|-------------|-------------|-------------|-------------|---------------|-------------|---------------|-------------|-------------|---------------|
| Ø 130 | DW259380130 | <b>214€</b> | DW259390130 | <b>347€</b> | DW25938AL0130 | <b>215€</b> | DW25939AL0130 | <b>229€</b> | DW253070130 | <b>37,40€</b> |
| Ø 150 | DW259380150 | <b>238€</b> | DW259390150 | <b>353€</b> | DW25938AL0150 | <b>231€</b> | DW25939AL0150 | <b>246€</b> | DW253070150 | <b>43,14€</b> |
| Ø 180 | DW259380180 | <b>246€</b> | DW259390180 | <b>363€</b> | DW25938AL0180 | <b>239€</b> | DW25939AL0180 | <b>264€</b> | DW253070180 | <b>47,47€</b> |
| Ø 200 | DW259380200 | <b>269€</b> | DW259390200 | <b>367€</b> | DW25938AL0200 | <b>258€</b> | DW25939AL0200 | <b>279€</b> | DW253070200 | <b>53€</b>    |

**i** \*Precio unidad. u/c= unidad caja



Junta de estanqueidad (T<200°C)  
u/c

|       |    |            |               |
|-------|----|------------|---------------|
| Ø 130 | 25 | DW25260130 | <b>4,47€*</b> |
| Ø 150 | 25 | DW25260150 | <b>4,47€*</b> |
| Ø 180 | 25 | DW25260180 | <b>5,97€*</b> |
| Ø 200 | 25 | DW25260200 | <b>7,46€*</b> |

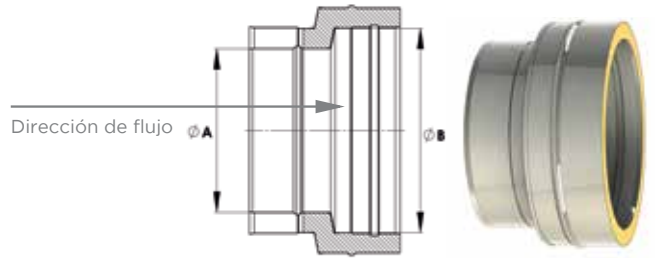


## ADAPTADOR CALDERA HEMBRA



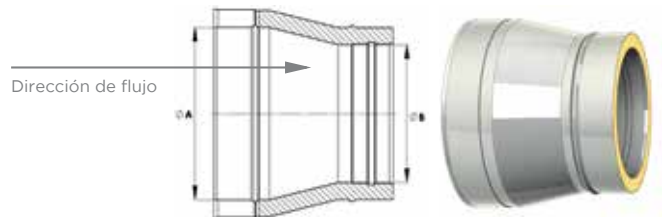
| CÓDIGO               | ØC CALDERA | ØF CHIMENEA | €      |
|----------------------|------------|-------------|--------|
| 908-DWECO37H00800130 | 78 a 82    | 130         | 68€    |
| 908-DWECO37H01000130 | 98 a 102   | 130         | 68€    |
| 908-DWECO37H01000150 | 98 a 102   | 150         | 77€    |
| 908-DWECO37H01100130 | 108 a 112  | 130         | 68€    |
| 908-DWECO37H01100150 | 108 a 112  | 150         | 77€    |
| 908-DWECO37H01200130 | 118 a 122  | 130         | 68€    |
| 908-DWECO37H01200150 | 118 a 122  | 150         | 77€    |
| 908-DWECO37H01250130 | 123 a 127  | 130         | 46,02€ |
| 908-DWECO37H01250150 | 123 a 127  | 150         | 77€    |
| 908-DWECO37H01300130 | 128 a 132  | 130         | 46,02€ |
| 908-DWECO37H01300150 | 128 a 132  | 150         | 78€    |
| 908-DWECO37H01300180 | 128 a 132  | 180         | 91€    |
| 908-DWECO37H01350130 | 133 a 137  | 130         | 46,02€ |
| 908-DWECO37H01350150 | 133 a 137  | 150         | 78€    |
| 908-DWECO37H01350180 | 133 a 137  | 180         | 91€    |
| 908-DWECO37H01400130 | 138 a 142  | 130         | 77€    |
| 908-DWECO37H01400150 | 138 a 142  | 150         | 50€    |
| 908-DWECO37H01400180 | 138 a 142  | 180         | 92€    |
| 908-DWECO37H01500130 | 148 a 152  | 130         | 77€    |
| 908-DWECO37H01500150 | 148 a 152  | 150         | 50€    |
| 908-DWECO37H01500180 | 148 a 152  | 180         | 92€    |
| 908-DWECO37H01500200 | 148 a 152  | 200         | 110€   |
| 908-DWECO37H01600130 | 158 a 162  | 130         | 87€    |
| 908-DWECO37H01600150 | 158 a 162  | 150         | 50€    |
| 908-DWECO37H01600180 | 158 a 162  | 180         | 92€    |
| 908-DWECO37H01600200 | 158 a 162  | 200         | 110€   |
| 908-DWECO37H01750130 | 173 a 177  | 130         | 87€    |
| 908-DWECO37H01750150 | 173 a 177  | 150         | 88€    |
| 908-DWECO37H01750180 | 173 a 177  | 180         | 61€    |
| 908-DWECO37H01750200 | 173 a 177  | 200         | 110€   |
| 908-DWECO37H01800130 | 178 a 182  | 130         | 87€    |
| 908-DWECO37H01800150 | 178 a 182  | 150         | 88€    |
| 908-DWECO37H01800180 | 178 a 182  | 180         | 61€    |
| 908-DWECO37H01800200 | 178 a 182  | 200         | 111€   |
| 908-DWECO37H02000150 | 198 a 202  | 150         | 92€    |
| 908-DWECO37H02000180 | 198 a 202  | 180         | 102€   |
| 908-DWECO37H02000200 | 198 a 202  | 200         | 72€    |
| 908-DWECO37H02250180 | 223 a 227  | 180         | 108€   |
| 908-DWECO37H02250200 | 223 a 227  | 200         | 113€   |
| 908-DWECO37H02500180 | 248 a 252  | 180         | 108€   |
| 908-DWECO37H02500200 | 248 a 252  | 200         | 113€   |

## AMPLIACIONES



| CÓDIGO              | Ø A | Ø B | €    |
|---------------------|-----|-----|------|
| 908-DWECO A01300150 | 130 | 150 | 128€ |
| 908-DWECO A01300180 | 130 | 180 | 173€ |
| 908-DWECO A01300200 | 130 | 200 | 226€ |
| 908-DWECO A01500180 | 150 | 180 | 157€ |
| 908-DWECO A01500200 | 150 | 200 | 218€ |
| 908-DWECO A01800200 | 180 | 200 | 197€ |

## REDUCCIONES



| CÓDIGO             | Ø A | Ø B | €    |
|--------------------|-----|-----|------|
| 908-DWECOR01500130 | 150 | 130 | 128€ |
| 908-DWECOR01800130 | 180 | 130 | 173€ |
| 908-DWECOR01800150 | 180 | 150 | 157€ |
| 908-DWECOR02000130 | 200 | 130 | 226€ |
| 908-DWECOR02000150 | 200 | 150 | 218€ |
| 908-DWECOR02000180 | 200 | 180 | 197€ |